

XXXXPol 698~960MHz×2/1427~2690MHz×2 65°/65° 15.6/18.0dBi 2°~12°/2°~12° Integrated and replaceable RCU (Remote Control Unit) Antenna

Electrical Specifications				
Frequency range (MHz)	R1/R2-698~960×2			
	698~806	790~862	824~894	880~960
Polarization	±45°			
Gain at mid tilt (dBi)	14.6	15.1	15.4	15.6
Gain over all tilts (dBi)	14.4±0.7	14.9±0.6	15.2±0.5	15.4±0.6
Horizontal 3dB beamwidth (°)	67±5	66±4	64±4	62±4
Vertical 3dB beamwidth (°)	11±0.8	10.2±0.7	9.5±0.6	9±0.7
Front to back ratio (dB) Total power, ±30°	>20	>22	>23	>23
Cross polar ratio (dB) (at Boresight)	>15	>15	>15	>17
Electrical downtilt (°)	2~12			
Sidelobe suppression (dB) (First sidelobe above main beam)	>15	>16	>16	>16
VSWR	<1.5			
Isolation: intra-system (dB)	≥25			
Isolation: inter-system (dB)	> 25 (R2 // R1, Y1, Y2)			
Intermodulation IM3 (2×43dBm carrier)	≤-150 dBc			
Impedance (Ω)	50			
Max. power per input (W) @50°C	400			
Lightning protection	Dc Ground			

Electrical Specifications					
Frequency Range (MHz)	Y1/Y2--1427~2690×2				
	1427~1518	1710~1920	1920~2200	2200~2490	2490~2690
Polarization	±45°				
Gain at mid tilt (dBi)	16.1	17.2	17.6	17.9	18.1
Gain over all tilts (dBi)	16.0±0.5	17.1±0.5	17.5±0.5	17.8±0.5	18±0.5
Horizontal 3dB beamwidth (°)	69±5	67±6	65±5	65±5	60±6
Vertical 3dB beamwidth (°)	8.1±0.6	6.8±0.6	5.8±0.5	5.3±0.5	4.9±0.5
Front to back ratio (dB) Total power, ±30°	>24	>26	>25	>25	>25
Cross polar ratio (dB) (at Boresight)	>18	>19	>22	>21	>21
Electrical downtilt (°)	2~12				
Sidelobe suppression (dB) (First sidelobe above main beam)	>15	>17	>16	>17	>15
VSWR	<1.5				
Isolation: intra-system (dB)	≥25				
Isolation: inter-system (dB)	> 25 (R2 // R1, Y1, Y2)				
Intermodulation IM3 (2×43dBm carrier)	≤-150 dBc				
Impedance (Ω)	50				
Max. power per input (W) @50°C	200				
Lightning protection	Dc Ground				

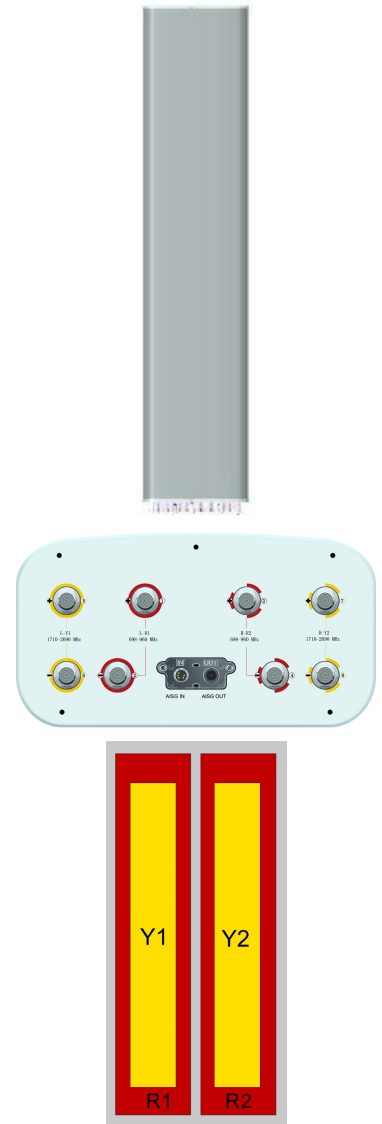
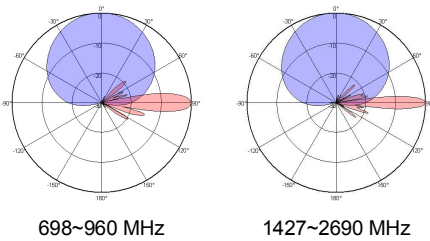
Mechanical Specifications

Connector	8×4.3-10 Female
Connector position	Bottom
Height × width × depth (mm)	2080×379×198
Packing size (mm)	2370×445×250
Antenna weight (kg)	34
Installation kit weight (kg)	5.5
Packing weight (kg)	44
Wind load (N,at 150km/h) Frontal/Lateral/Maximum	455/180/780
Max. wind velocity (km/h)	250
Radome material	GFRPP
Radome color	Gray
Mechanical tilt (°)	0~10
Operating temperature (°C)	-50~65
Mounting hardware (mm)	Φ50~Φ115

Integrated RET Properties

RET model	TRCU-TQ10P2V01
RET type	Integrated (Replaceable)
RET protocol	AISG 2.0/3GPP
Power supply(V)	10-30 DC
Power consumption(W)	≤0.6 (Idle, 12V), ≤6 (In motion, 12V)
Adjustment time (Full Range)	< 4Mins
Adjustment cycles	> 50,000
Temperature range (°C)	-40~65
Lightning protection	3KA(8/20μs) @ Pin5 & Pin3; 5KA(8/20μs) @ Pin1 / Pin6 & Pin7
Connectors	2×8 Pin circle connector according to IEC 60130-9 and AISG. Daisy chain in:Male,Daisy chain out:Female Pin1:12V;Pin3:RS485B;Pin5:RS485A;Pin6:10-30V; Pin7:GND;Pin2&Pin4&Pin8:N/C

Antenna Pattern Sample For Reference



Ant Array	RET Unique ID
R1	TY00000.....R1
R2	TY00000.....R2
Y1	TY00000.....Y1
Y2	TY00000.....Y2