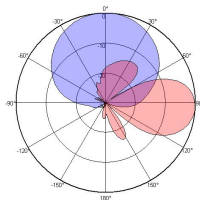
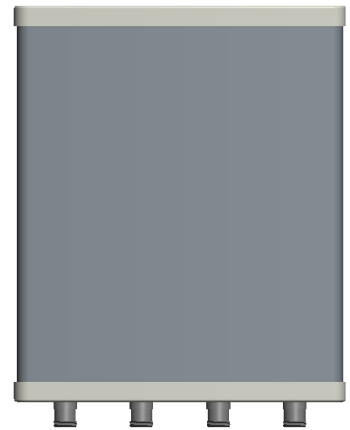


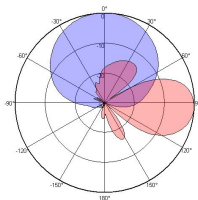
XXPol 1710~2690MHz/3300~3800MHz 65°/65° 13/12.5dBi 3°/3° Fixed Electrical Downtilt Antenna

Electrical Specifications						
Frequency range(MHz)	1710~2690				3300~3800	
	1710~1920	1920~2200	2200~2500	2500~2690	3300~3600	3600~3800
Polarization	±45°					
Gain (dBi)	12±0.4	12.4±0.4	12.6±0.5	13±0.5	12.1±0.5	12.5±0.5
Horizontal 3dB beamwidth (°)	67±4	65±5	63±5	60±5	67±5	63±4
Vertical 3dB beamwidth (°)	26±3	21±2	19±2	18±2	22.8±3	21.5±2
Front-to-back ratio (dB)	>24	>25	>24	>25	>24	>25
Cross-polar ratio (dB)	>15(0°)	>15(0°)	>15(0°)	>15(0°)	>15(0°)	>15(0°)
Electrical downtilt (°)	3				3	
VSWR	≤1.5				≤1.5	
Isolation: intra-system (dB)	≥25				≥25	
Intermodulation IM3 (2×43dBm carrier)	≤150dBc				≤-150 dBc	
Impedance (Ω)	50				50	
Max. power per input (W) @50°C	200				150	
Lightning protection	Dc Ground					

Mechanical Specifications	
Connector	4×4.3-10 Female
Connector position	Bottom
Height×width×depth (mm)	345×220×100
Packing size (mm)	530×315×215
Antenna weight (kg)	2.7
Installation kit weight (kg)	1.5
Packing weight (kg)	5
Max. wind velocity (km/h)	216
Radome material	ASA
Radome color	Gray
Mechanical tilt (°)	0~15
Operating temperature (°C)	-40~60
Mounting hardware (mm)	Φ50~Φ115



1710~2690MHz



3300~3800MHz

